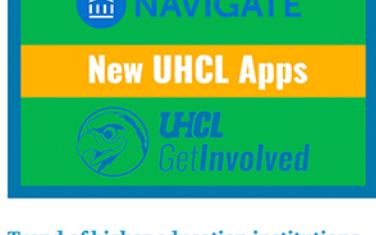




## NEW UHCL APPS

### New applications geared to help Hawks get involved while navigating UHCL



[Trend of higher education institutions utilizing mobile apps makes way to UHCL](#)

This spring semester begins with two new applications oriented toward students. GetInvolved and Navigate provide students a closer look into their university experience through differing lenses. [Read Article](#)

#### COMMENTARY: Lost and losing time with Navigate, EAB's app for college students

With cell phones glued to our hands, an app to help with college deadlines and scheduling sounds like a win-win for most students. The download was fast and free, so with an hour to spare, I took a quick tour of Navigate. [Read Article](#)

[VIDEO: Students react to new UHCL Navigate app](#)

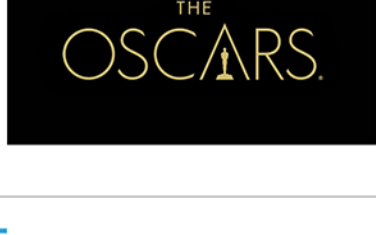
## THE ACADEMY AWARDS

### LIST: 6 tips on predicting Oscar outcomes

With the Academy Awards on Feb. 24, check out these easy tricks on figuring out what, and who will win on Oscar night. [Read Article](#)

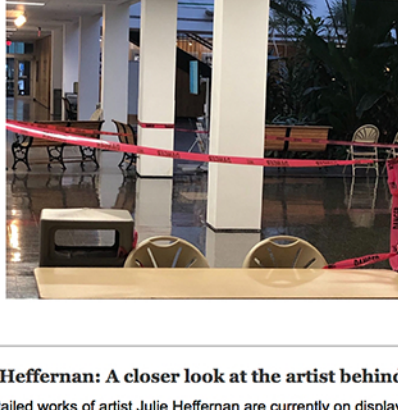
[LIST: 10 of the most memorable Oscar speeches](#)

[QUIZ: Which Lady Gaga album are you?](#)



## CAMPUS NEWS & LIFE

### Removal of bulletin spaces in Bayou Building results in mixed reviews



The bulletin board kiosks in Atrium I and the student organization bulletin wall by the Patio Café in the Bayou Building have been taken down. There was no campus wide communication sent out beforehand. [Read Article](#)

[Are UHCL students protected from the measles outbreak? The 95 percent solution](#)

#### Julie Heffernan: A closer look at the artist behind 'When the Water Rises'

The detailed works of artist Julie Heffernan are currently on display in the UHCL Art Gallery. "When the Water Rises: Recent Paintings" is a collection of vibrant and intricate works inspired by the wreckage Heffernan observed after Hurricane Sandy.

[Read Article](#)

## NEWS

### The measles outbreak meets the anti-vaccination movement



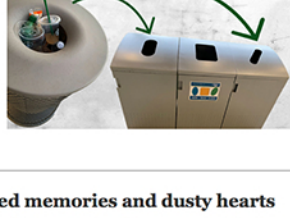
Measles, a respiratory disease caused by a virus that is highly contagious, has made its way into the Houston area. The Centers for Disease Control and Prevention confirmed 101 cases of measles in the United States as of Feb. 7, 2019. Five confirmed cases are here in the Houston area. Of the five confirmed cases reported, four of them are children under 2 years of age. [Read Article](#)

[Production of new nuclear weapon taking place in Texas Panhandle](#)

## OPINIONS

### Never refuse to reuse: The importance of recycling on campus

It is crucial that students, faculty and staff of UHCL engage in proactive efforts that can prevent devastating damage to the environment. UHCL needs to come together as a community to hold each other accountable and work toward a more efficient and conscious recycling program to benefit not only the beautiful environment in which UHCL resides on but for the planet and its future. [Read Article](#)



#### COLUMN : Scratched memories and dusty hearts

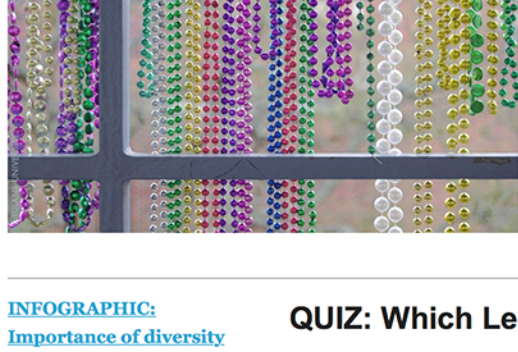
The age of CDs has passed. They sit in landfills amongst videotapes and DVDs. There was plenty wrong with compact disks. The plastic cases always broke, sometimes while trying to get the security sticker off the edge at the time of purchase. [Read Article](#)



**LOOK** for an email from the National Survey for Student Engagement (NSSE) in your UHCL mailbox this semester.

## MULTIMEDIA

### MAP: Laissez les bon temps roule at Mardi Gras! Galveston



With countless parades, live entertainment and family-friendly activities, Mardi Gras! Galveston is catered to every individual. Grab the ones you love and laissez les bon temps roule. Check out a few of Mardi Gras! Galveston's hot spots below. [See Map](#)

[LIST: 10 wishes for 2019 sports](#)

[INFOGRAPHIC: Importance of diversity in the workplace](#)

#### QUIZ: Which Legend of Zelda tribe do you belong?

[GALLERY: CAB's Winter Wonderland kicks off spring 2019 semester](#)



[INFOGRAPHIC: Raising awareness about eating disorders](#)

[TIMELINE: Musical performance history of the Houston Livestock Show and Rodeo](#)

The game follows the protagonist, Link, as he makes his way across foreign lands in order to reunite the tri-force, defeat the evil Gannon, and rescue Princess Zelda. To celebrate the franchises birthday, take this quiz to see where in the land you belong. [Take Quiz](#)

#### VIDEO: Separating art from the artists

From Harvey Weinstein to R. Kelly to Rosanne Barr, celebrity scandals have called into question what one should do as a fan. The Signal reporter Joe Riley talked with students on campus about if and how one should separate art from the artists. [See Video](#)

## CONTEST

### The Signal hosts Fantasy Movie League for spring 2019 season

It's back! The Signal is hosting its second season of Fantasy Movie League (FML). Similar to fantasy football, the game is centered on the weekend movie box office charts. The spring 2019 season will kick off Feb. 26 and last for 14 weeks. [See How to Play](#)



#### #HawkHerStory

Who are some UHCL women (students, faculty, staff, alumni, administrators) you admire? For Women's History Month, The Signal will be sharing these notes of appreciation as part of our #HawkHerStory campaign.

**Recommendations**